

#23

2 - Orange Group

Learning to sew
sharp curves and
use one-way fabrics.

Read! Sew! Learn!
for ages 7 and up

Level 2 Lesson 3

Project
'A'
"R" - Top

Project
'B'
Pull-on
Shorts



Sewing Instruction Presented In
Easy 2-Part Progressive Lessons

© 1996 Sewing Prose

DIRECTIONS

Sewing Adventures for Children

ANALYSIS

11 step

DONE

☐

VERY  GOOD

NOT SO  GOOD



My fabric edges are cut neatly.



My fabric edges looked choppy.



I stitched the seams evenly at 15mm, and the hems at 5mm.



My stitching is sort of wobbly and crooked.



My curved seams are neatly curved.



My curves look more like a crooked line.



I clipped the curved seams just to the stitching line.



My clips accidentally cut the stitching line, and I fixed it.



I backstitched at both ends of every seam.



I forgot to back-stitch on some of the seam ends.



The neck opening has square corners.



The neck opening has corners that are mis-matched.

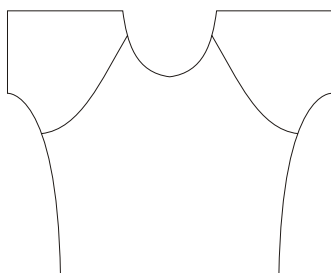


I am ready for the next project -
Lesson 3b - Shorts



I better make another R-Top before I go to the next project.

RAGLAN SLEEVE



A raglan sleeve depends on the way the sleeve is attached to the front and back of the shirt. Look for a seam going from the underarm to the neck - one in the front and one in the back.

A shirt with raglan sleeves may have long sleeves or short sleeves, or any kind of a neckline. Look at the way the sleeves are sewn on to know if it has raglan sleeves.

This is why shirt #23a is called "R-Top" - because you learn to make "R"aglan sleeves.

"R" - Top

THREAD

FABRIC

WASHABLE PRINT OR SOLID

(IF YOU WANT TO USE A ONE-WAY DESIGN
AND ARE WILLING TO WORK THROUGH A FEW
MORE STEPS, BUY 1.9M (2 YDS) INSTEAD)

Average Time - 5 hours



B
Pull-on Shorts
SIZES TO FIT CROTCH LENGTH
44 TO 63.5 CM
ONE SIZE
MAY VARY

THREAD

ONE SPOOL OF GOOD QUALITY
MAY MATCH OR CONTRAST

FABRIC

0.8M (7/8 YD)

114 CM WIDE (45")

WASHABLE PRINT OR SOLID

(IF YOU WANT TO USE A ONE-WAY DESIGN
AND ARE WILLING TO WORK THROUGH A FEW
MORE STEPS, BUY 1.2M (1 & 1/8 YDS) INSTEAD)

ELASTIC

1.0 M (1 YD)

20 MM WIDE (3/4") NON-ROLL

Average Time - 5 hours

16-PAGE INSTRUCTION BOOK
FOR EACH PROJECT (2 BOOKS),
WITH PICTURES AND WORDS
FOR EACH SEWING STEP

6 SKILLCARDS ABOUT SEWING
RULES, WORDS, AND SKILLS.
COLLECT THEM INTO A
REFERENCE BOOK THAT
YOU CAN USE FOREVER

**MULTI-SIZE TISSUE FOR
EACH PROJECT (2 TISSUES)
ON MEDIUM WEIGHT PAPER**

8 TOTAL CONTROL SEWING
PRACTICE PAPERS OF
DIFFERENT KINDS TO IMPROVE
EYE + HAND + FOOT
COORDINATION

2 COLOR-CODED (ORANGE)
WOVEN LABELS THAT SAY
"MADE BY ME"
SHOW YOUR PRIDE!

**With this Orange Group
lesson #23
you will learn:**

ABOUT NEEDLES FOR YOUR SEWING MACHINE

MORE BODY MEASUREMENTS

HOW TO WORK WITH FABRIC THAT IS PRINTED WITH A ONE-WAY DESIGN

**This lesson will
be easier for you
if you already know:**

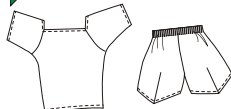
HOW TO SEW CURVED SEAMS

HOW TO CLIP CURVES

HOW TO PRESS CURVED SEAMS

HOW TO SEW AND PRESS STRAIGHT SEAMS

These skills are presented in Orange Group lesson #22. Use your Skillcards for reference whenever you need to.



R-TOP	PULL-ON SHORTS
FINISHED LENGTH	FINISHED LENGTH
SMALLEST	SMALLEST
43CM(17")	34.5CM(13.5")
LARGEST	LARGEST
56.5CM(22")	45.5CM(17.5")

©1996 Sewing Prose 1-800-729-7182

DIRECTIONS

WE USE THE METRIC SYSTEM BECAUSE METERS AND CENTIMETERS CAN BE ADDED AND MULTIPLIED JUST LIKE DOLLARS AND PENNIES ON A CALCULATOR OR IN YOUR HEAD.

PRODUCT OF U.S.A.

